

MUGS MATTERS



HELLO folks!

Ho! Ho! Ho! - it's that fabulous time of the year again folks when we don our Father Christmas hat and start to be jolly.

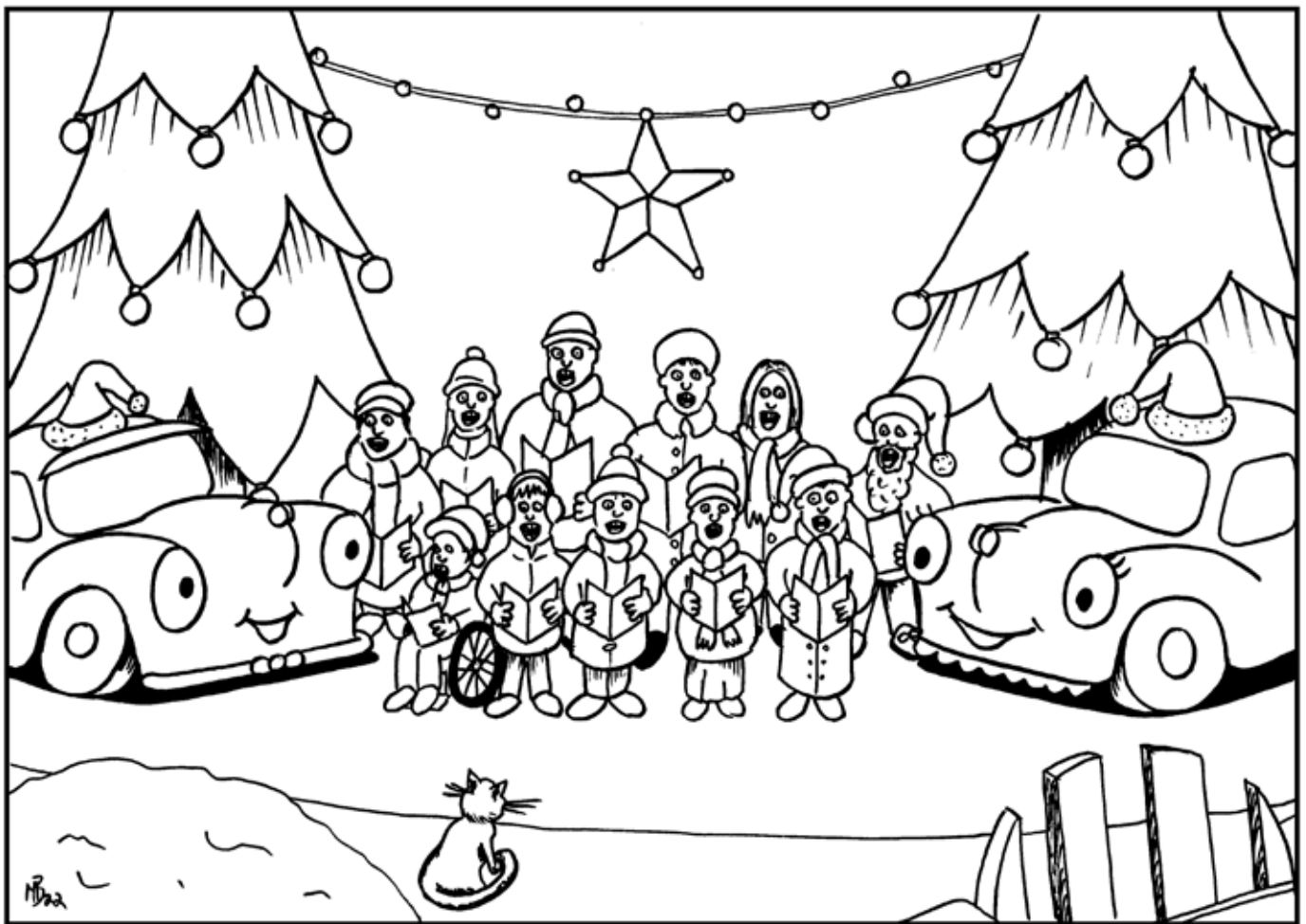
Yes, it's the festive season and the snow has started to fall and fall, so **Meg** and I can have a wheely great time and roll about in the white stuff.

One of our favourite things about Christmas is all the lovely carols and there is nothing better than listening to children singing their hearts out and with rosy cheeks too.

So Meg and I were delighted when a group of singers braved the cold and flocked to our garage for a sing song.

As you can see from the cartoon below, our pal **Michael "Clumsy Pickle" Barnes** decided to draw a cartoon of the scene to use for today's competition below.

We hope you all have a very **Merry Christmas** and a **Happy Hogmany** and why not tell us what you have been up to and what presents you received by emailing **Rebecca.hay@mmoc.org.uk** and you might win a wee prize. **MUG**



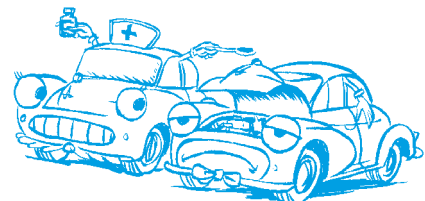
COMPETITION

It's Christmas and you know what that means - plenty of colour and especially red!

Yes folks I want you to dig out your favourite and most brightest felt tip pens and colour in the brilliant cartoon which our pal **Michael "Clumsy Pickle" Barnes** has created just for you.

It pictures some lovely carol singers bursting with songs and having fun in our garage and so Meg and I think this deserves a good old dash of colour and maybe a sprinkle of glitter too.

It's just for fun, but we have lots of space on our garage wall if you fancy sending it to us, there may be even a lovely wee prize in it for you. Send in your efforts via **Rebecca.hay@mmoc.org.uk** and you might win a wee prize.



COMPETITION CORNER



Meg and I have had the tinsel out and given our favourite wordsearch a sprinkle of Christmas fizz.

All you have to do is find the 19 words which all have a very festive message and once you have done that, you can sit down with a selection box or a mince pie and relax and watch a festive film.

But before you do all that why not your completed wordsearch in to us via Rebecca.hay@mmoc.org.uk and before you know it, a wee prize might end up on your doorstep, just hope it's not a cracker!



MERRY CHRISTMAS

K F A M I L Y T R N K B J L H
 Y M U T J C O R B S X G O J H
 Y U P L R C A R O L S I Y I F
 Y C M R R E Q N W E E V E N N
 L H F E E P E H D N D I J G O
 S R B T D S C S S Y W N G L R
 Y I Q M T Y E R C M C G S E T
 U S T O C K I N G S J A E I H
 U T L I G H T S T G S D N W P
 L M F L I O V S M S N J S E O
 K A V F X B I Z G I I G D T L
 B S R E B Z S L E I G H X C E
 F K Y O L Q H R N S N O W R U
 X N L R J F Z C D N D E X X V
 H S T A R W S A N T A T L V M

BOW	FAMILY	NORTH POLE	SNOW
CANDY CANE	GIVING	PRESENTS	STAR
CAROLS	JINGLE	REINDEER	STOCKINGS
CHRISTMAS	JOY	SANTA	TREES
ELF	LIGHTS	SLEIGH	

MUG MIRTH

Some very merry gurgles for you as below, very festive, but if you fancy digging out your mistletoe funnies, then why not send in some of your own in, via Rebecca.hay@mmoc.org.uk

HOW DO YOU EXPECT A SHEEP TO SAY MERRY CHRISTMAS?

FLEE-EE-CE NAVIDAD!

WHAT DID FATHER CHRISTMAS'S LITTLE HELPERS LEARN AT SCHOOL?

THE ELF-ABET!

WHAT DO YOU THINK THE ELVES DO AFTER THEIR SCHOOL ENDS?

THE GNOME WORK!

WHAT IS FATHER CHRISTMAS'S FAVOURITE PLACE TO GIVE PRESENTS?

IDAHO-HO-HO!

THE STAMP SAID SOMETHING TO THE CHRISTMAS TREE, CAN YOU GUESS WHAT? STICK WITH ME AND WE ARE GOING PLACES!

WHAT GOES OH! OH! OH!?

FATHER CHRISTMAS GOING BACKWARDS!

WHAT DO YOU THINK THE SNOWMEN WEAR ON THEIR HEADS?

SNOW CAPS!

WHAT DID ADAM SAY THE DAY BEFORE CHRISTMAS?

IT'S CHRISTMAS, EVE!

JOIN US

I am sure there are plenty of Morris Minors out there. If you are under 16 then why not fill in the Join Us coupon so I can keep in touch.

NAME: _____

ADDRESS: _____

OK folks, you have filled in the **Join Us** coupon and sent it in. But before **Meg** and I get in touch we need you to do some work and send in your competition entries, jokes or letters to the address at the top of the page.

THANKS